

PRODUCT

IDEAL FOR

GREAT FOR

HANDLING

AESTHETICS

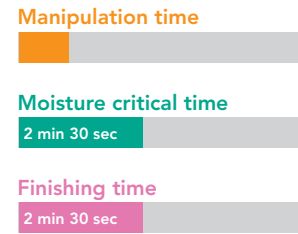
CLINICAL CASES

EQUIA® Forte Fil & Coat
(Auto-cure GIC & LC Coat)



Restorations where occlusal wear resistance and aesthetics are priorities

- Occlusal, proximal and cervical restorations
- Sandwich restorations - closed and open
- Transitional restorations



- Shades: A1, A2, A3, A3.5, B1, B2, B3, C4
- Great translucency



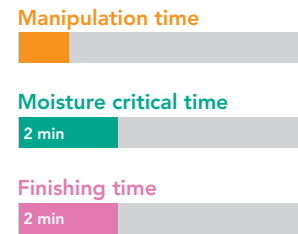
Dr G Millicich

Fuji® BULK
(Auto-cure GIC)



Restorations where acid resistance, protection of surrounding surfaces and speed of bulk cure are priorities

- Selected occlusal, proximal and cervical restorations
- Sandwich restorations - closed and open
- Transitional restorations



- 1 shade (A3 opaque)
- High opacity



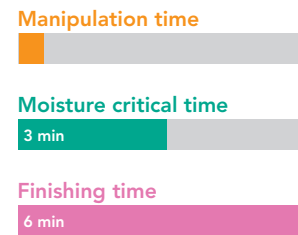
Dr G Millicich

Fuji VIII GP
(Auto-cure, resin-reinforced GIC)

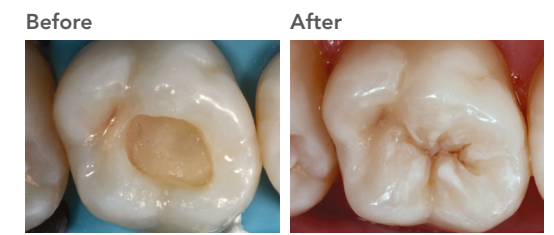


Cervical and sandwich technique restorations where acid resistance, fracture toughness and speed of placement are priorities

- Sandwich restorations - closed and open
- Cervical restorations
- Transitional restorations



- Shades: A2, A3, A3.5
- Very good translucency



Dr J Smithson

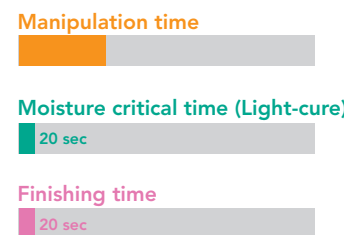
Application time of resin bond for sandwich restorations:
a. Immediate for hydrophobic resin bond, eg Stick Resin
b. 3 min for hydrophilic resin bond eg G-aenial Bond.

Fuji II LC
(Tri-cure, resin-reinforced GIC)

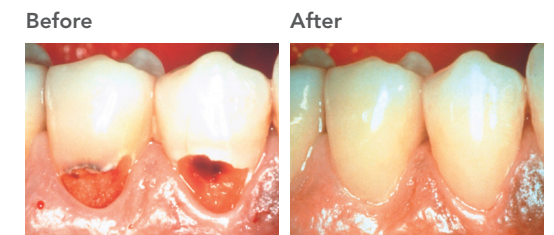


Cervical and sandwich technique restorations where acid resistance, fracture toughness and speed of set are priorities

- Sandwich restorations - closed and open
- Cervical restorations
- Transitional restorations



- Shades: A1, A2, A3, A3.5, A4, B2, B3, B4, C2, C4, D2
- Excellent translucency



Dr. S Saïto

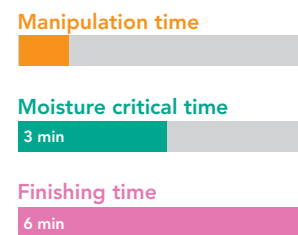
Place in 2 mm increments and light-cure.

Fuji VII EP/Fuji VII
(Auto-cure GIC)

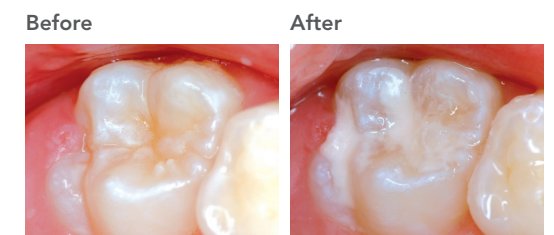


Protection of "at-risk" surfaces, including erupting molars (fissure protection) and exposed root surfaces, and for caries stabilisation

- Fissure protection
- Protection of root surfaces
- Endo access
- Caries stabilisation



- Shades: White and Pink
- High opacity



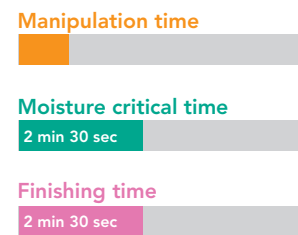
Dr. J Lucas

Fuji IX GP EXTRA
(Auto-cure GIC)

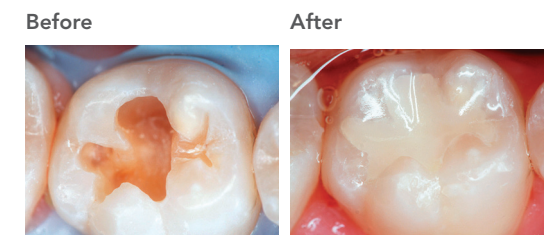


General purpose "all rounder" GIC where aesthetics are a priority

- Selected occlusal, proximal and cervical restorations
- Sandwich restorations - closed
- Transitional restorations



- Shades: A2, A3, A3.5, B1, B3, C4
- Excellent translucency



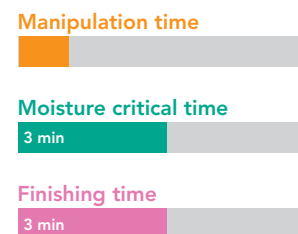
Dr. H Ngo

Fuji IX GP FAST
(Auto-cure GIC)

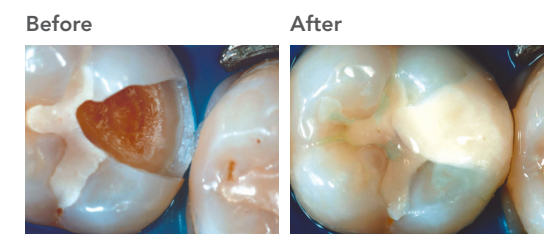


General purpose "all rounder" GIC

- Selected occlusal, proximal and cervical restorations
- Sandwich restorations - closed
- Transitional restorations



- Shades: A2, A3, A3.5, B2, B3, C4



Dr. H Ngo

Glass Ionomer Restorative Cement (GIC) Usage Guide

KEY POINTS

GIC Manipulation time includes an initial wet and glossy stage, which is essential for establishing chemical bonding to the tooth. This is followed by a short gel stage where contouring of the GIC is possible. The end of the manipulation time is reached shortly after the loss of surface gloss of the GIC.

GIC Moisture critical time is the period from start of mix where moisture contamination of the GIC should be avoided. If isolation cannot be guaranteed during restorative procedures, immediately apply a light-cured resin coating to the GIC (eg EQUIA Forte Coat). For surface protection (eg applying Fuji VII EP to an erupting molar), COCOA BUTTER is the preferred method of moisture protection.

The term “selected restorations” refers to non-load bearing restorations in permanent teeth.

ACCESSORIES



CAVITY CONDITIONER



EQUIA® Forte Coat



COCOA BUTTER

